

PWT PREMIUM WALL TERMINAL

User Guide

PLEASE READ BEFORE USE



Keep away from fire.



Keep away from water.



Not for outdoor use.



To be installed by a qualified electrician/
installer.

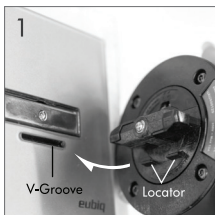
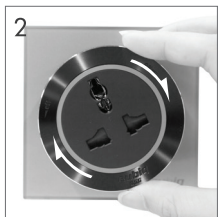
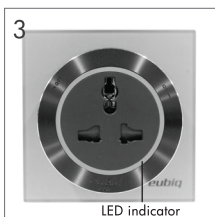


FIG. 1 Align Locator on Eubiq Key to V-Groove before inserting.

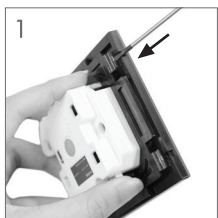


Turn accessory 90° clockwise ('Click' sound).

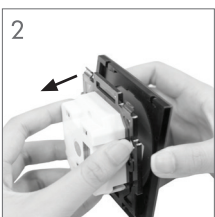


Accessory is now switched 'ON'.
(LED indicator 'ON')

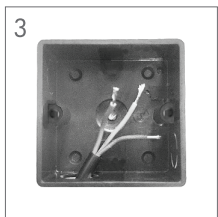
Wiring Instructions



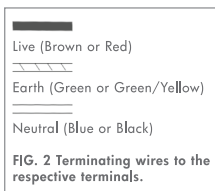
Lightly push both catches at the top using a 2.4mm flathead screwdriver.



Remove faceplate from terminal body.



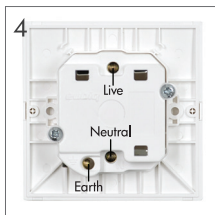
Identify cables and strip the wires.



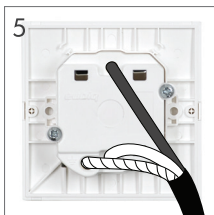
Technical Specification

Product Description	: Premium Wall Terminal
Rated Voltage	: 250V a.c.
Rated Current	: 10 Amp/13 Amp/16 Amp
Frequency	: 50Hz/60Hz
Terminal Capacity (Live, Neutral and Earth)	: 3 x 2.5mm ²
Ambient Operating Temp.	: -5°C to +40°C (Not to exceed an average of more than 35°C in any 24 hours period)
Degree of Protection	: IP20
Material (Enclosure)	: Polycarbonate
Metal Components Material	: Brass, Phosphors Bronze
Dimension	: 86mm x 86mm x 28mm
Weight	: Estimated 65 grams
Fixing Centre	: 60mm
Recommended Flush Boxes	: 'ABB', 'Jung' Moulded Type and Steel Type. Depth: Min. 5mm. Flush boxes shall comply to BS 4662

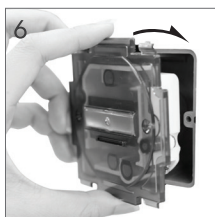
Wiring Instructions (Continued)



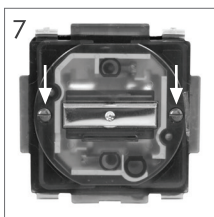
Identify the live, earth, neutral terminals on the terminal body.



Terminate the wires to the respective terminals.



Insert the terminal body into the wall box after wire termination.



Mount the terminal body to the wall box with the screws provided.



Snap the faceplate onto the terminal body as shown.



Premium Wall Terminal is ready for use.

1 Year Limited Warranty

1. Eubiq Pte Ltd ("Eubiq") warrants to the end-user of the product ("the Customer") that the product will be free from defects in materials and workmanship under normal use for a period of one (1) year from the date of retail purchase by the original end-user purchaser ("Warranty Period").
2. The Customer should access and refer to Eubiq's website at www.eubiq.com for a list of Eubiq authorised dealers to contact for warranty service.
3. All requests for warranty service must be made within the Warranty Period, and be accompanied by the original dated proof of purchase.