



DIRECTOR'S TRACK

Power & Data Track

Installation Guide

CAUTION



Keep away from fire.



Keep away from water.



Not for outdoor use.



To be installed by a qualified electrician/installer.

Technical Specifications

Power Track

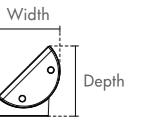
Rated Voltage	: 125V a.c. Single-phase 250V a.c. Single-phase
Rated Current (Pre-wired cable)	: Total load shall not exceed individual country plug type 10Amp, 13Amp, 16Amp ~ 1.5mm ² 3-core flexible cord 15Amp - 14AWG 3-core flexible cord 20Amp - 12AWG 3-core flexible cord
Frequency	: 50Hz / 60Hz
Connection of Adaptor or Tap-off Unit	: Intended to be connected and disconnected when system is energised and with a load connected
Ambient Operating Temperature	: -5°C to +40°C (Not to exceed an average of more than 35°C in any 24 hours period)
Degree of Protection	: IP4X
Degree of Pollution	: 2 (Non-conductive pollution with temporary conductivity caused by condensation)

Material

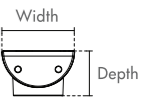
Track and Housing	: Aluminium
Insulation	: Polycarbonate

Size and Weight (Based on 1 metre length)

Overall Dimensions - 45° Configuration (Depth x Width x Length): 100.5mm x 87.4mm x 1000mm



Overall Dimensions - 90° Configuration (Depth x Width x Length): 65mm x 100mm x 1000mm



Weight : Estimated 3.5 kilograms

Data

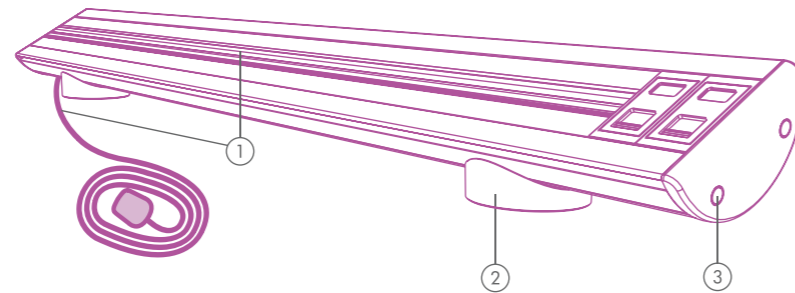
Recommended Keystone Type (Sold Separately):

- Panduit Single-Gang Mini-Com Module Jack
- Systemax Single Standard M-Series Modular Jack
- Keystone Type Cat5e Jack - AMP, Brandrex, 3M, Clipsal, Krone
- Keystone Type Cat6 Jack - AMP, Brandrex, Alanlek, Clipsal

* All brand names and trademarks belong to their respective owners
 * Products specifications are subject to change without prior notice.
 * Pictures shown in this guide are for illustrative purposes only. Actual product outlook may differ.

Package Contents

- 1 x Director Track with 2 x DS3 Data Socket Housing (Complete with 3-meter cord with plug)
- 2 x Mounting Base
- 4 x Screw Capping
- 4 x Wall Plug
- 4 x No.10 Pan Head Philips Screw
- 4 x Anti-Skid Pad
- 1 x Installation Guide



* Actual contents may differ depending on country and configuration.

Angle Configuration

All Director Track are pre-assembled at 45°
* For alternative configuration, refer to "Installation - 90° Wall Mounting"

Desk Mounting or Free Standing (Without Screws)



Wall Mounting



Tools Required



Power Drill

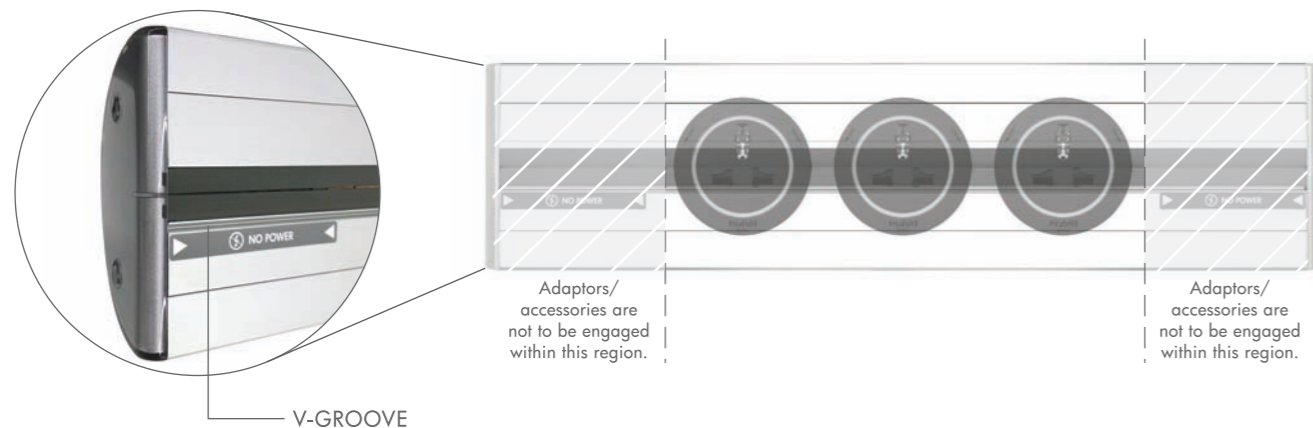


Spirit Levels



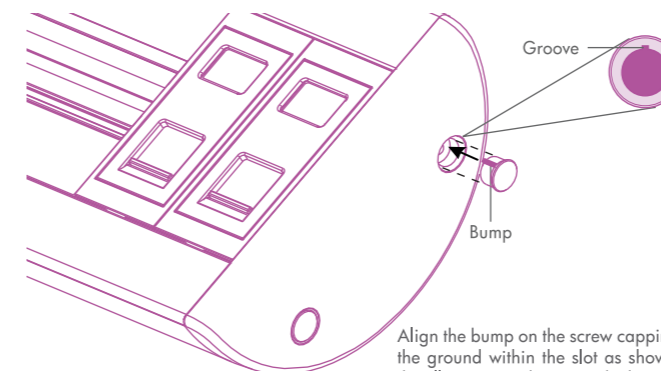
Philips Screwdriver

Product Orientation



Securing the Screw Capping

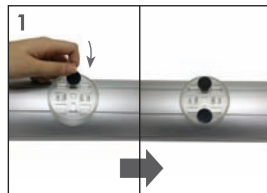
Track is pre-assembled without securing the screw capping for ease of data outlet preparation.



Align the bump on the screw capping to the ground within the slot as shown in the illustration above. Push the screw capping in firmly to secure.

Free Standing - 45°

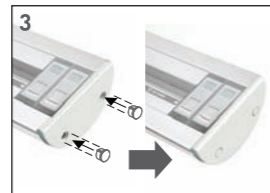
Follow the steps below to start as a free stand, desk mount track.



Turn the track over so the bottom of the mounting base faces up. Attach the anti-skid pads to the indicated locations of the mounting base as shown. Repeat this step for the 2nd mounting base.



Refer to "Installation of Data Points" for data point connection.



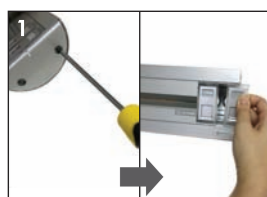
Snap in the screw cappings (refer to "Securing the Screw Capping").



Place the track on the desk. To power up, connect plug to the nearest power outlet and switch it on.

Installation of Data Points

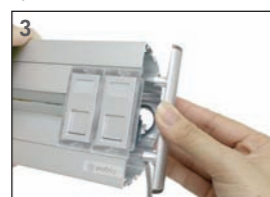
Follow the steps below to install the data points



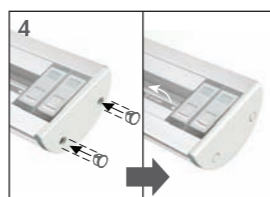
Unscrew the end cap & slide out the data socket housing.



Insert network cable through the opening on the rear of the track. Terminate cable to data jack and attach to data socket housing. (Kindly refer to "Technical Specifications" for recommended jacks)



Reinsert data socket housing to the track & reinstall the end cap.



Snap in the screw cappings (refer to "Securing the Screw Capping").



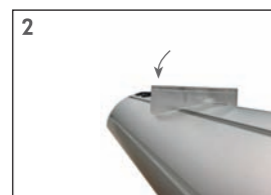
To begin using the data points, insert one end of the phone/data cable firmly until it clicks. The opposite end of the cable should be connected to your telephone/modem device.

Changing from 45° to 90°

Follow the steps below to change the angle of the track.



Track is pre-assembled with mounting base at 45°. Detach the mounting base with a screwdriver.



Snap the mounting base to the center grooves.



End result.

Installation - Wall Mounting

Follow the steps below to mount the track on wall.



Put the track onto the wall to be installed. Use a spirit level to make sure the track is horizontal.



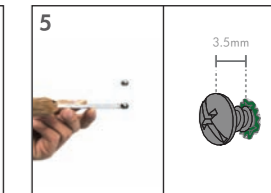
Mark the locations of the mounting base.



Remove the mounting base to mark the screw holes. Total 4 screws are needed to secure the track onto the wall.



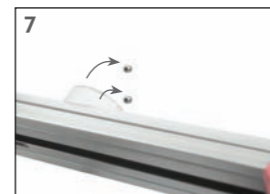
Drill according to the markings. Insert the wall plugs into the drilled holes. Use a mallet if necessary. For wooden surface, no wall plug is required.



Fasten screws into the wall plugs. Leave a gap of 3.5mm between the base of screw head and the wall surface for mounting. For wooden surface, fasten screws directly into surface.



Snap the mounting base back to the track.



Hang the mounting base onto the screw heads.



End result.

3 Years Limited Warranty

1. Eubiq Pte Ltd ("Eubiq") warrants to the end-user of the product ("the Customer") that the product will be free from defects in materials and workmanship under normal use for a period of three (3) years from the date of retail purchase by the original end-user purchaser ("Warranty Period").
2. The Customer should access and refer to Eubiq's website at www.eubiq.com for a list of Eubiq authorised dealers to contact for warranty service.
3. All requests for warranty service must be made within the Warranty Period, and be accompanied by the original dated proof of purchase.